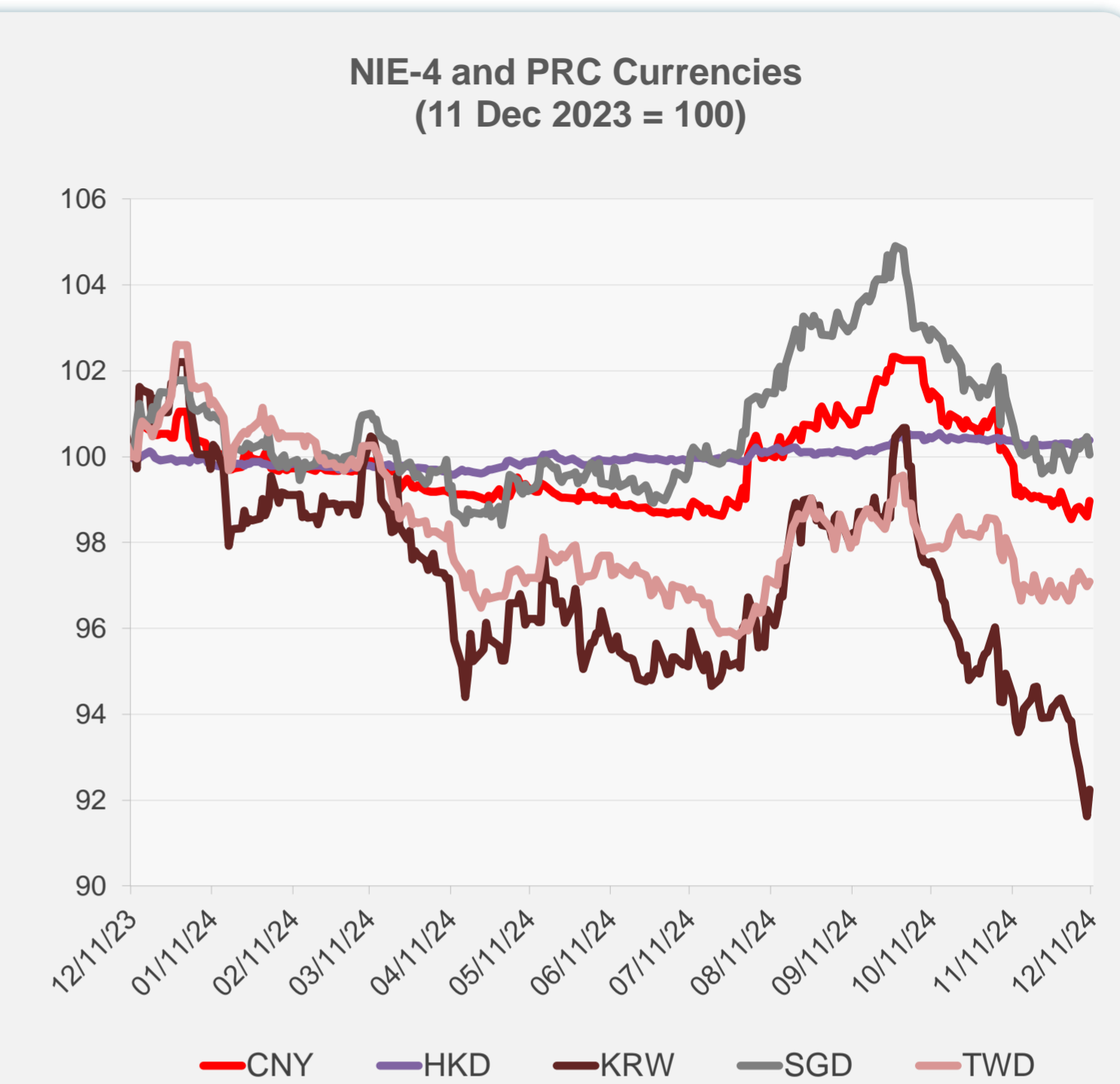
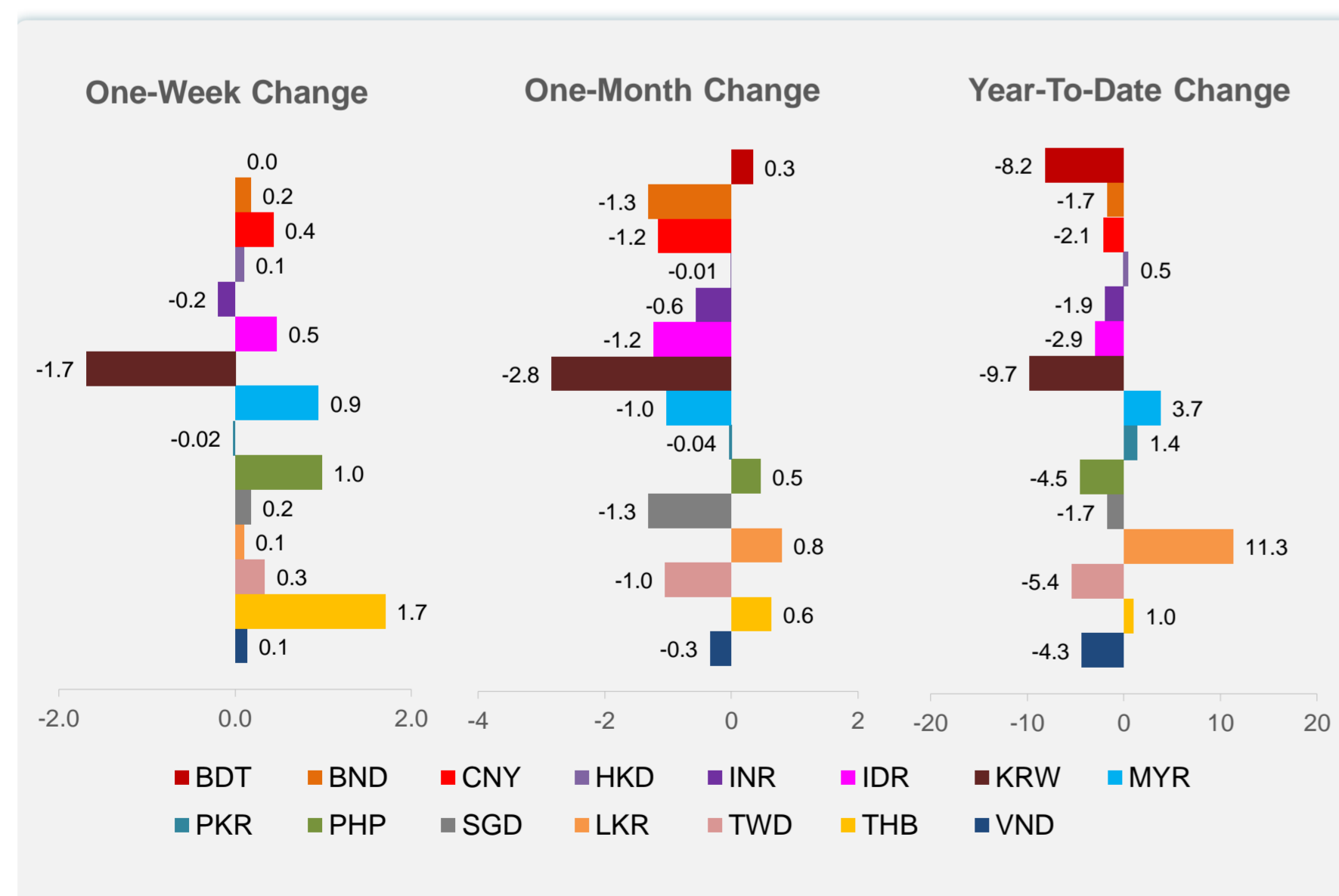
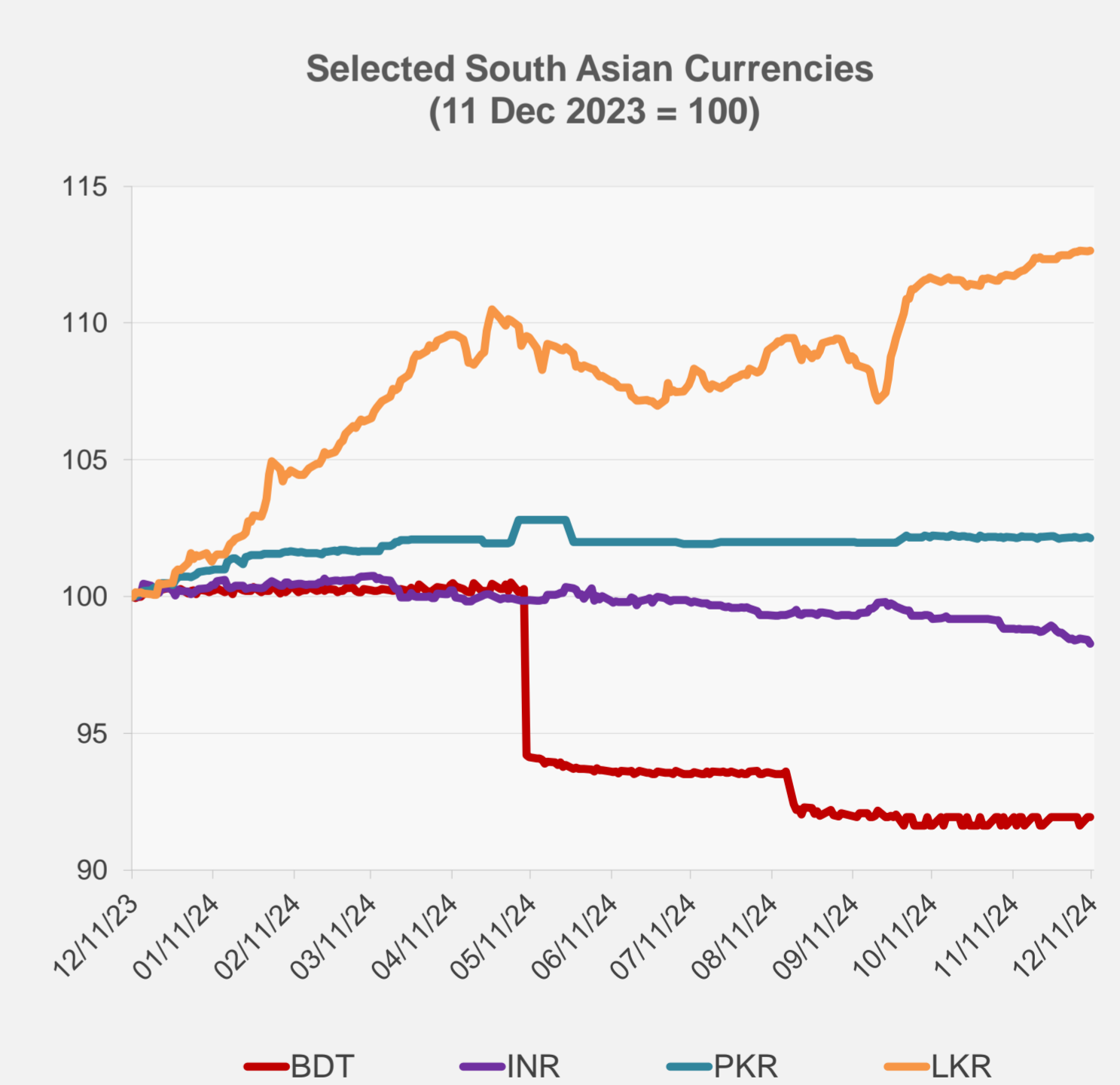
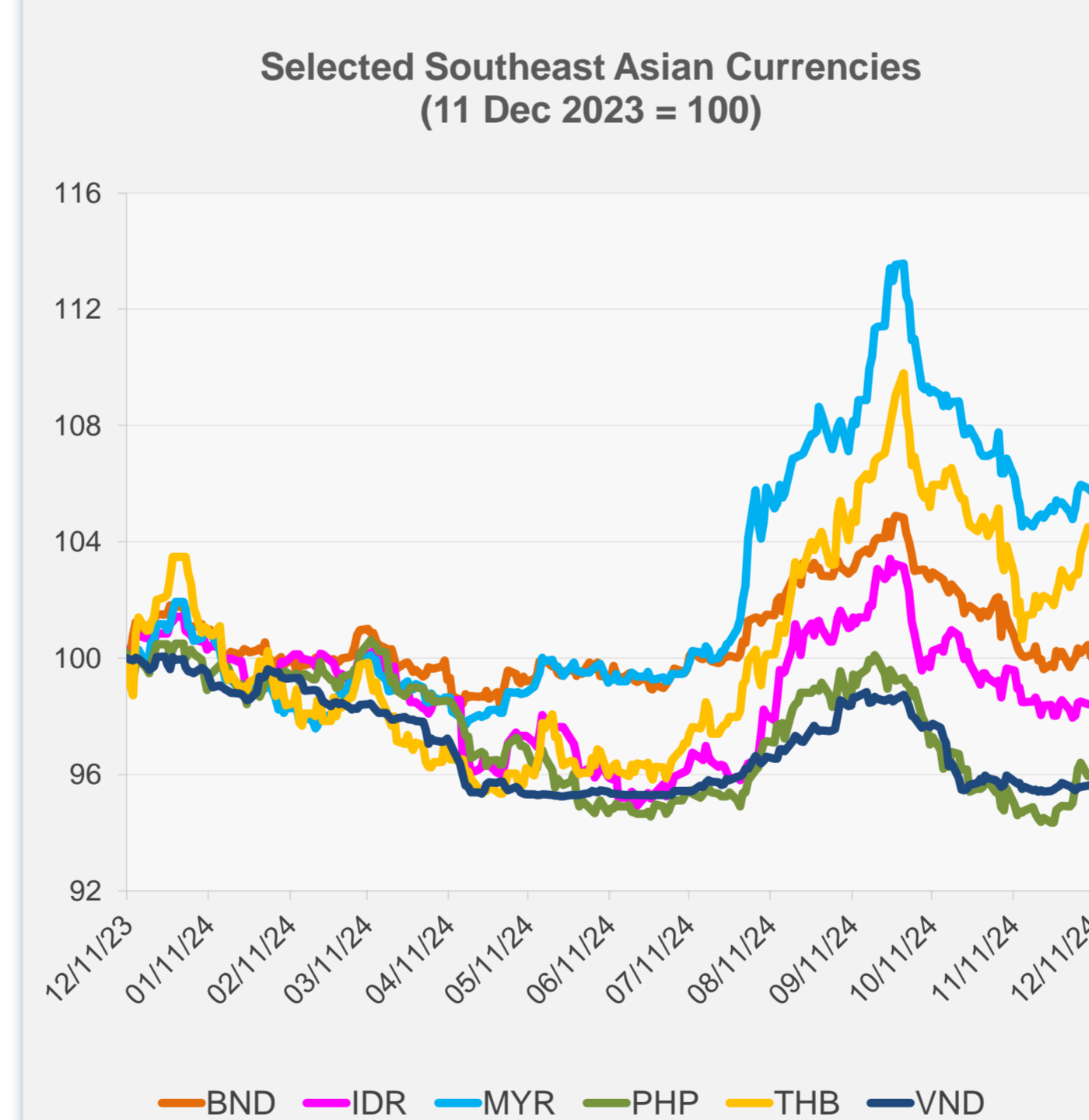


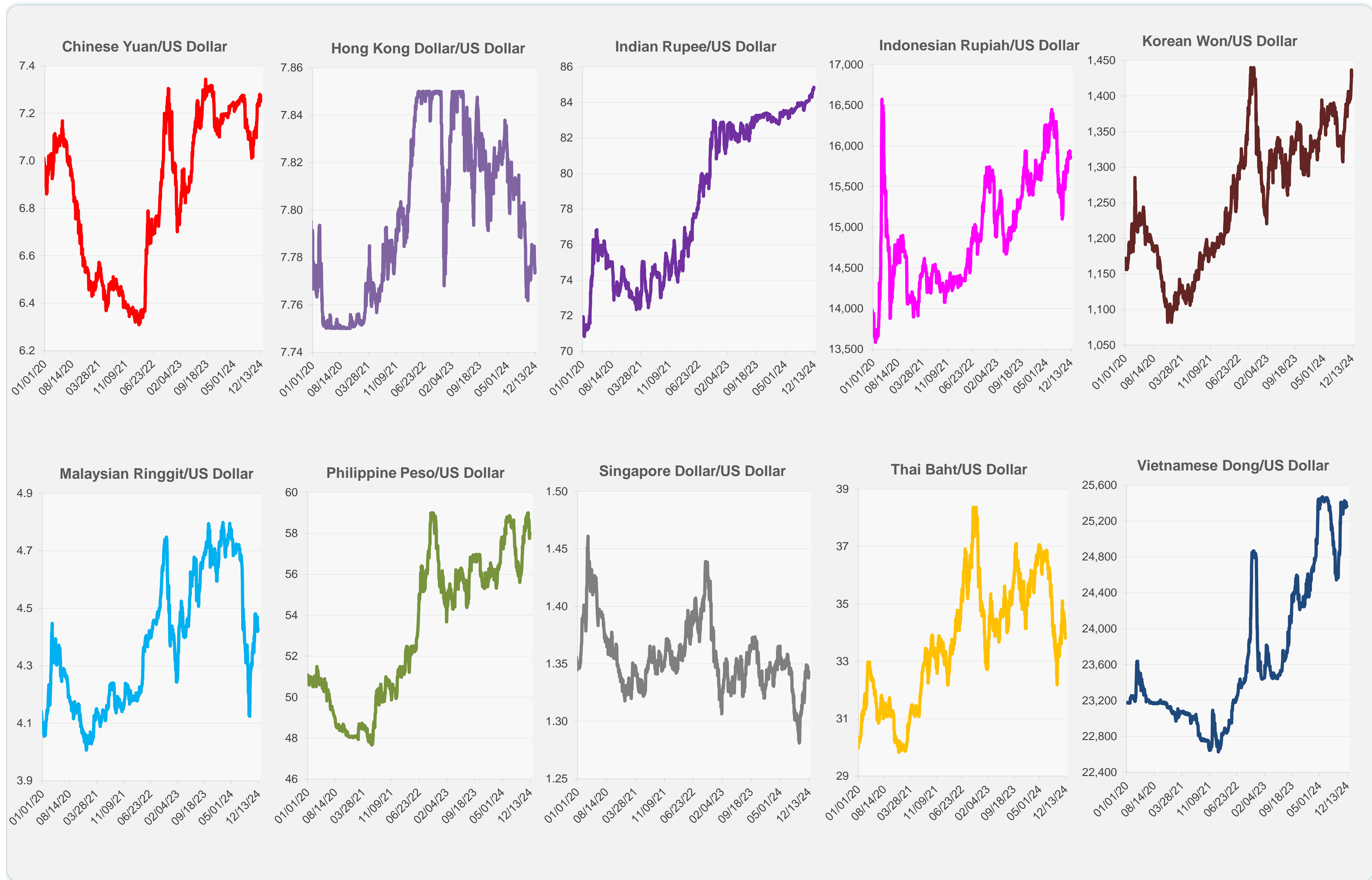
	Latest Closing	% change from Previous Day	% change from 01-Jan-24
Euro	0.95	-0.83	-4.90
Japanese yen (JPY)	152.13	-0.72	-7.39
Bangladeshi taka (BDT)	119.50	0.00	-8.16
Brunei dollar (BND)	1.34	-0.41	-1.70
Chinese yuan (CNY)	7.25	0.37	-2.06
Hong Kong dollar (HKD)	7.78	-0.03	0.46
Indian rupee (INR)	84.85	-0.15	-1.91
Indonesian rupiah (IDR)	15,865.00	0.00	-2.95
Korean won (KRW)	1,427.05	0.68	-9.74
Malaysian ringgit (MYR)	4.43	-0.07	3.75
Pakistan rupee (PKR)	277.93	-0.04	1.41
Philippine peso (PHP)	58.01	0.02	-4.51
Singapore dollar (SGD)	1.34	-0.41	-1.70
Sri Lanka rupee (LKR)	290.19	0.03	11.29
Taipei,China NT dollar (TWD)	32.45	0.10	-5.37
Thai baht (THB)	33.81	0.00	0.98
Vietnamese dong (VND)	25,361.00	0.03	-4.31



NIE = Newly Industrialized Economies



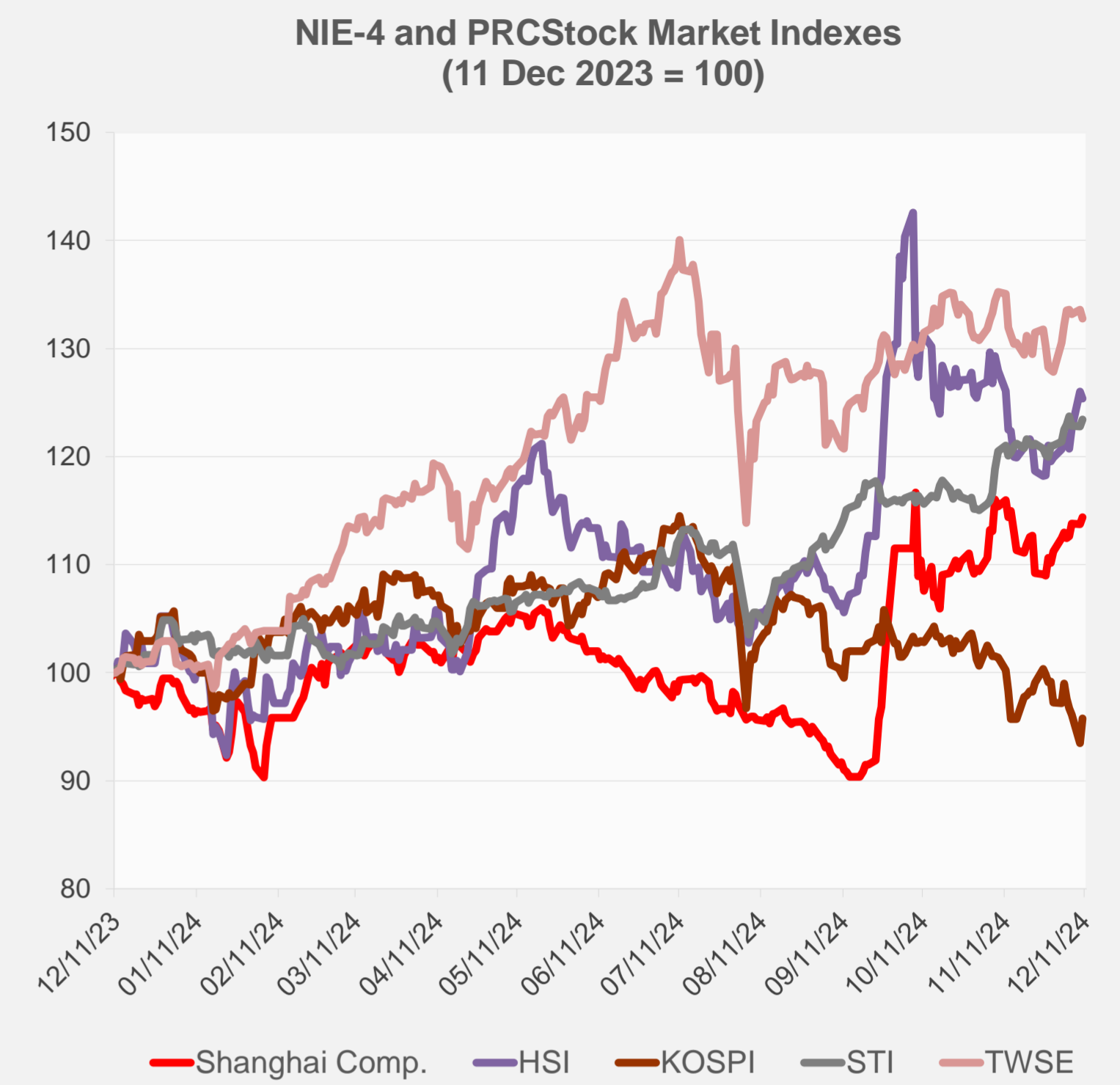
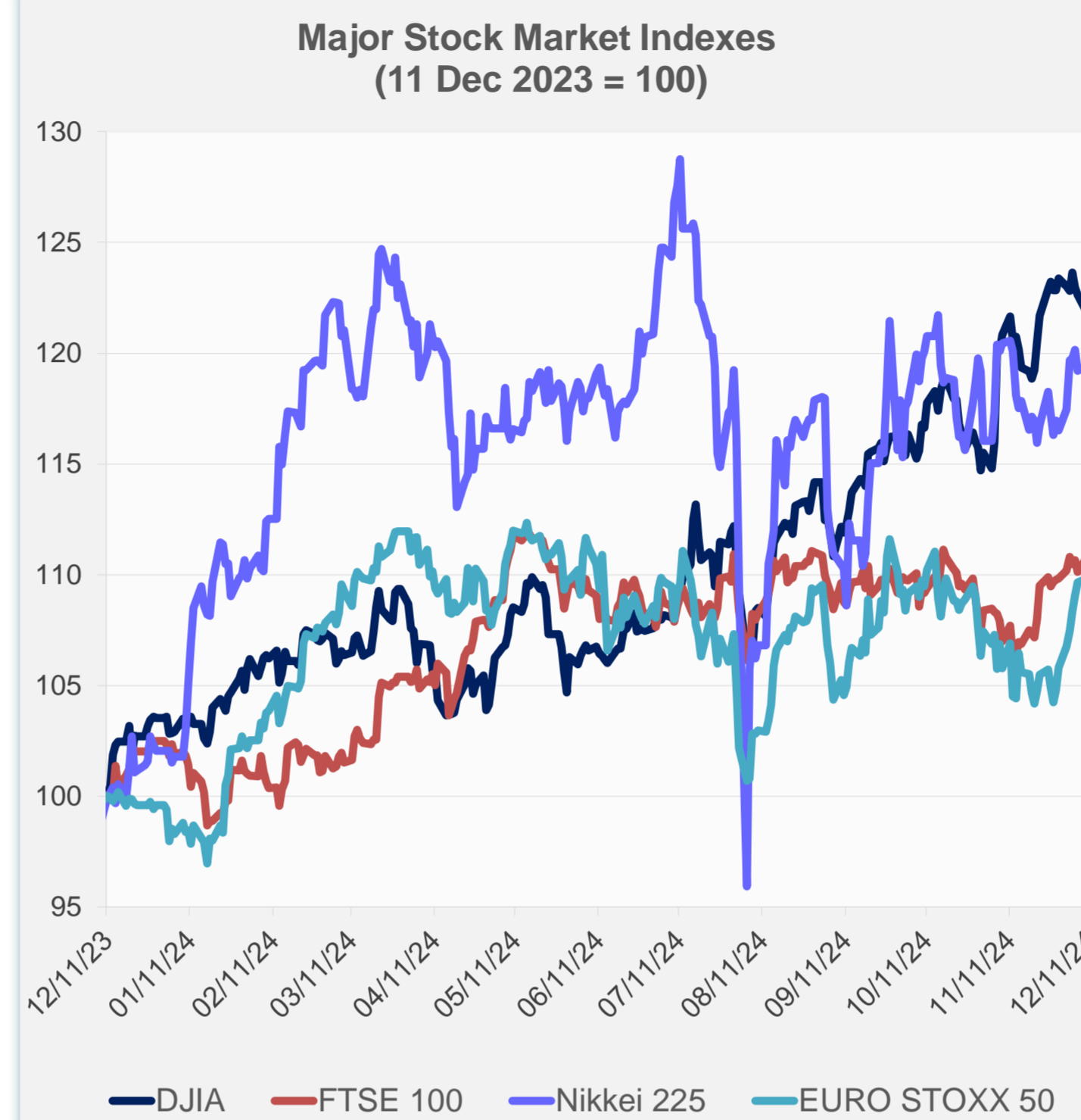
Note: Negative/Decreasing values indicate depreciation of local currency, and positive/increasing values indicate appreciation.
Source: ADB calculations using data from Haver Analytics.



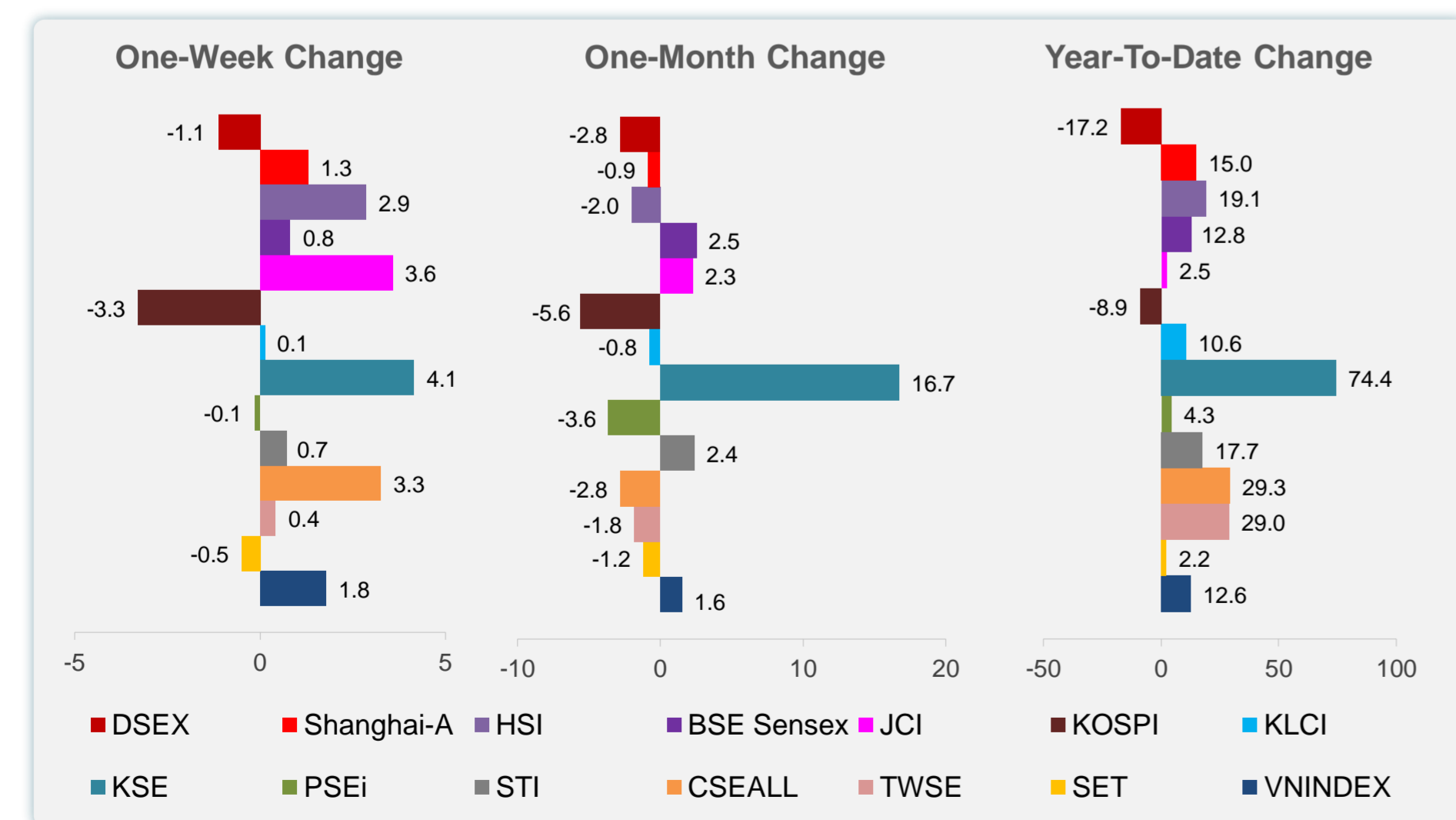
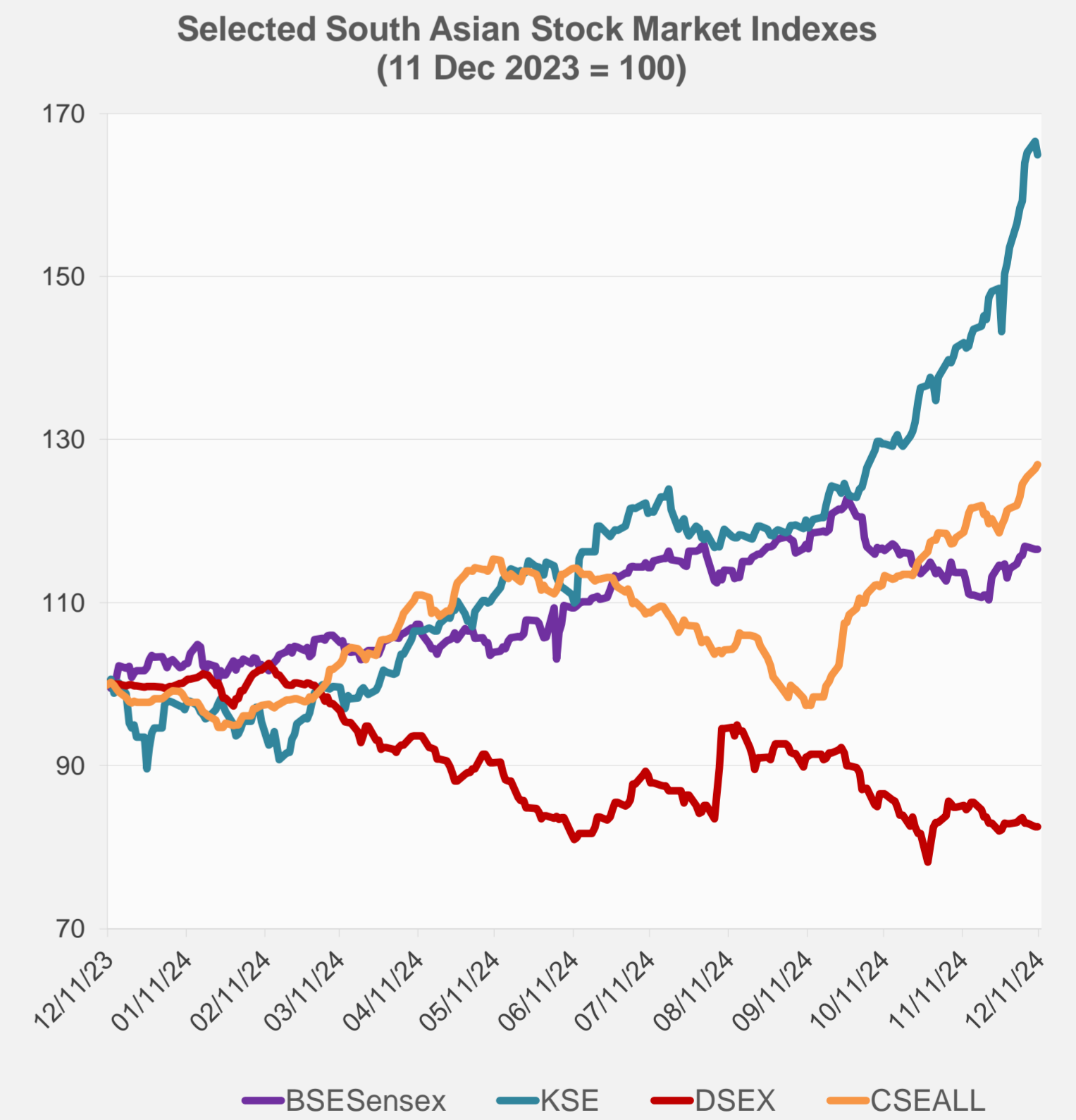
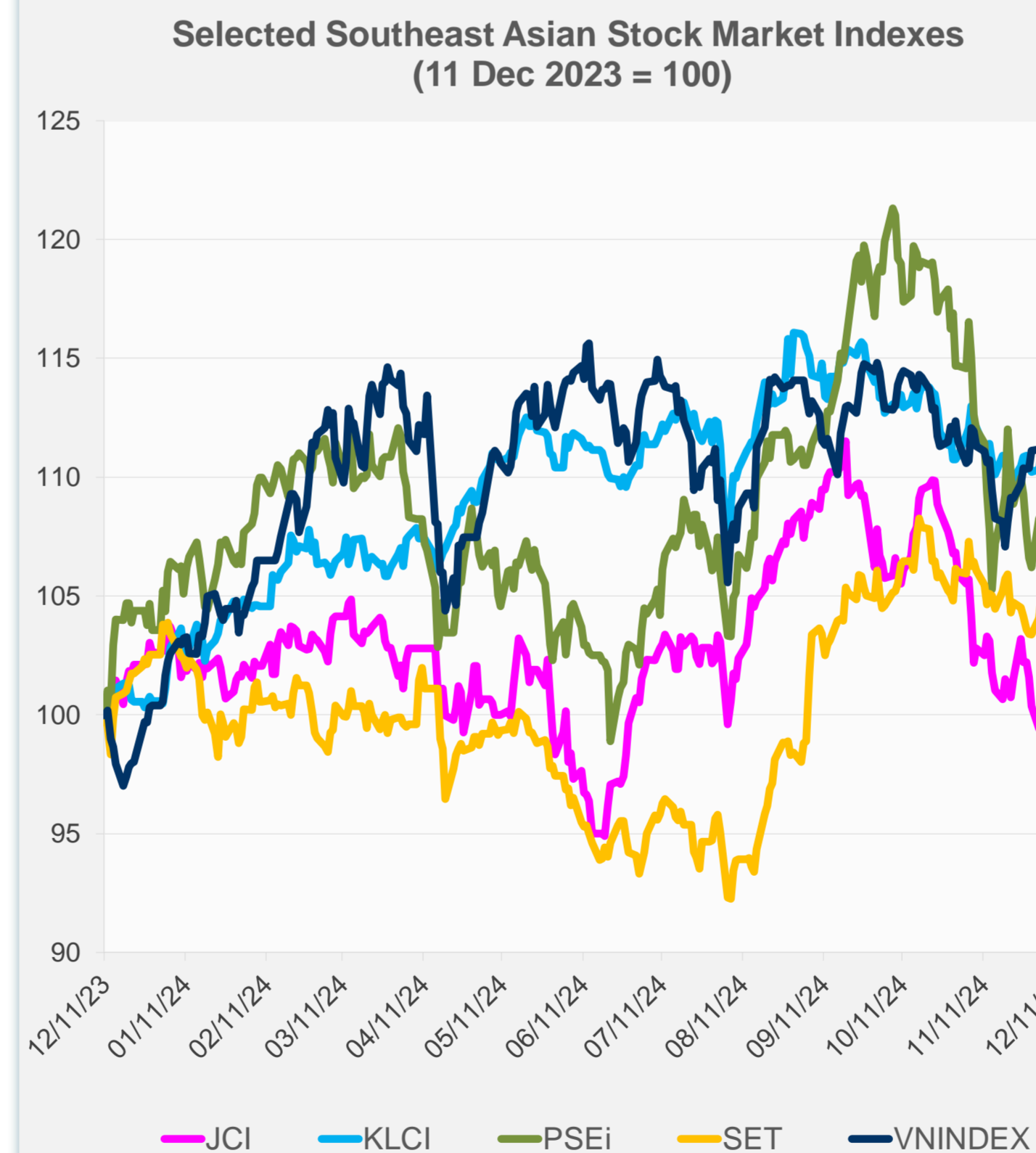
Source: Haver Analytics.

Daily Market Watch
STOCK INDEXES

	Latest Closing	% change from Previous Day	% change from 01-Jan-24
US Dow Jones Ind Avg	44,247.83	-0.35	17.40
US NASDAQ	19,687.24	-0.25	31.15
US S&P 500	6,034.91	-0.30	26.52
UK FTSE 100	8,280.36	-0.86	7.07
EURO STOXX 50	4,951.74	-0.68	9.52
Japan NIKKEI 225	39,367.58	0.53	17.64
Bangladesh DSEX	5,166.83	0.00	-17.24
PRC Shanghai Comp.	3,422.66	0.59	15.05
Hong Kong, China HSI	20,311.28	-0.50	19.15
India BSE Sensex	81,510.05	0.00	12.78
Indonesia JCI	7,453.29	0.21	2.48
Korea, Rep. of KOSPI	2,417.84	2.43	-8.94
Malaysia KLCI	1,608.97	-0.15	10.61
Pakistan KSE 100	108,896.65	-0.98	74.37
Philippines PSEi	6,724.82	0.66	4.26
Singapore STI	3,813.55	0.49	17.69
Sri Lanka CSEALL	13,774.96	0.41	29.29
Taipei, China TWSE	23,125.08	-0.64	28.97
Thailand SET	1,447.53	0.00	2.24
Viet Nam VNINDEX	1,272.07	-0.14	12.58



NIE = Newly Industrialized Economies



Sources: ADB calculations using data from CEIC Data Company and Haver Analytics.

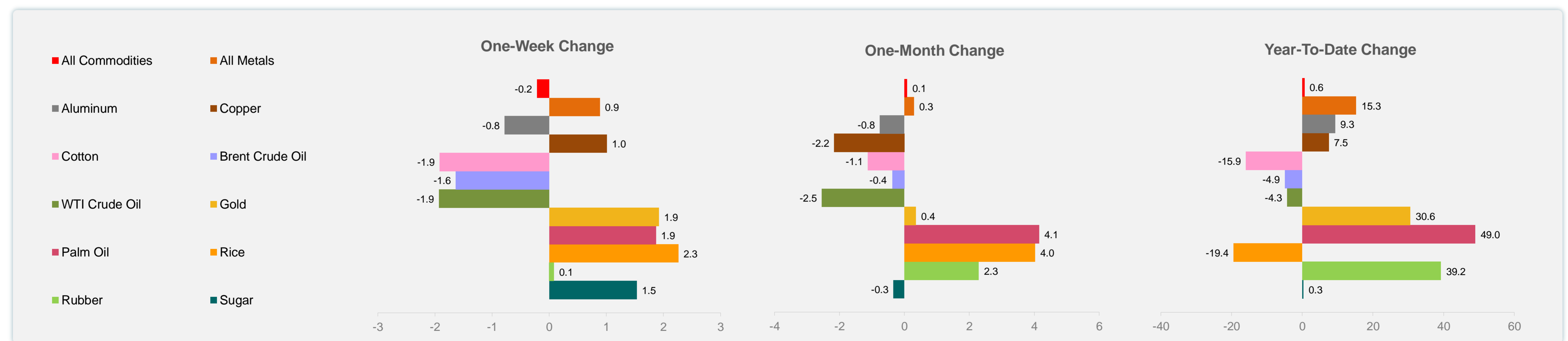
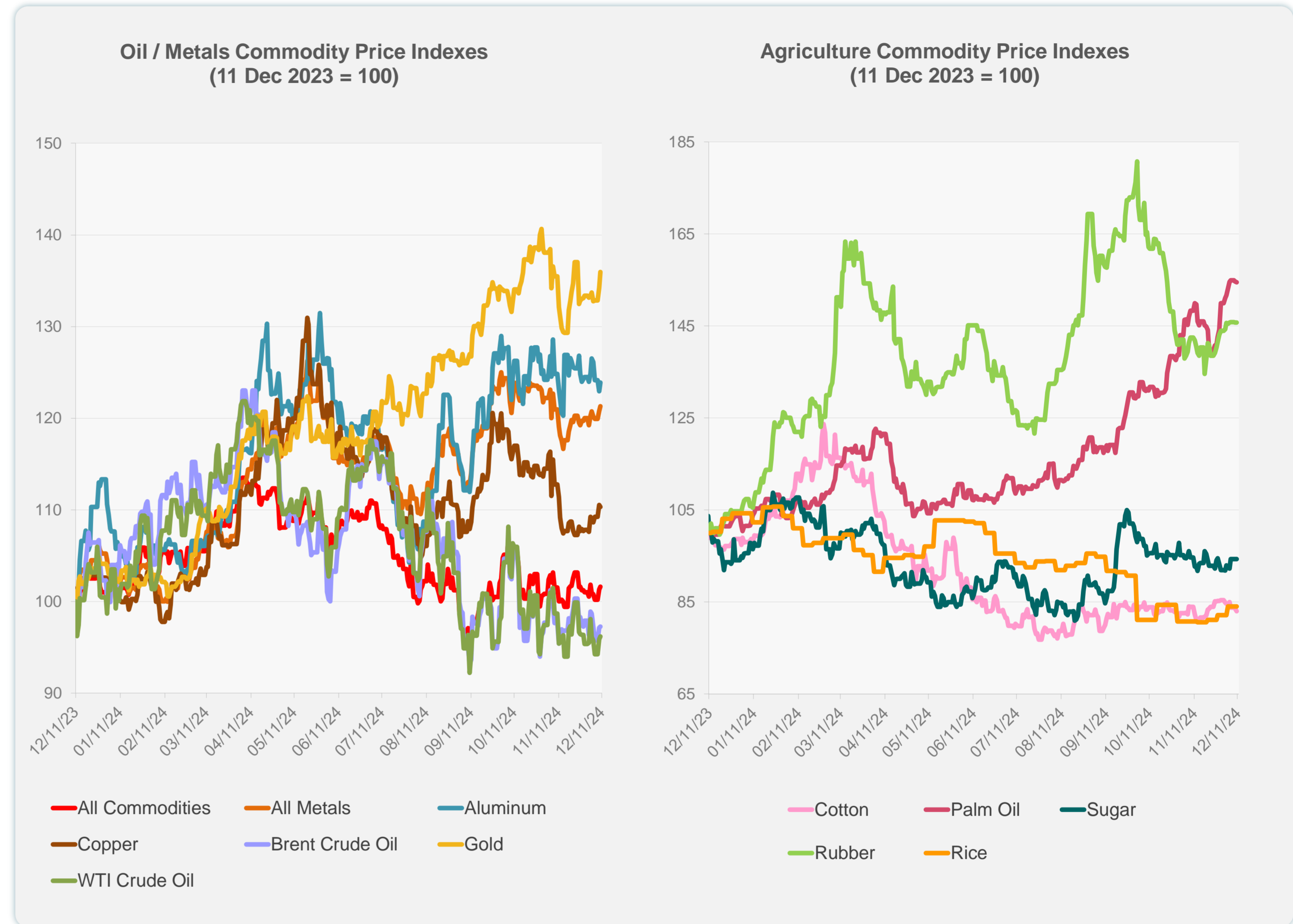


Sources: CEIC Data Company and Haver Analytics.

	Unit	Latest Closing	% change from Previous Day	% change from 01-Jan-24
S&P All Commodities	US\$	538.86	0.30	0.60
S&P All Metals	US\$	319.81	0.43	15.28
Aluminum	US\$/metric ton	2,564.43	0.78	9.33
Copper	US\$/metric ton	9,101.04	-0.20	7.53
Cotton	US cents/lb	65.98	-0.71	-15.95
Brent Crude Oil	US\$/barrel	73.77	0.14	-4.94
WTI Crude Oil	US\$/barrel	68.59	0.32	-4.27
Gold	US\$/troy oz	2,694.25	1.28	30.60
Palm Oil	US\$/metric tonne	1,204.99	-0.12	48.95
Rice ¹	US\$/metric ton	543.00	0.00	-19.44
Rubber ²	US\$/kg	241.00	0.00	39.23
Sugar	US cents/lb	20.54	0.00	0.34

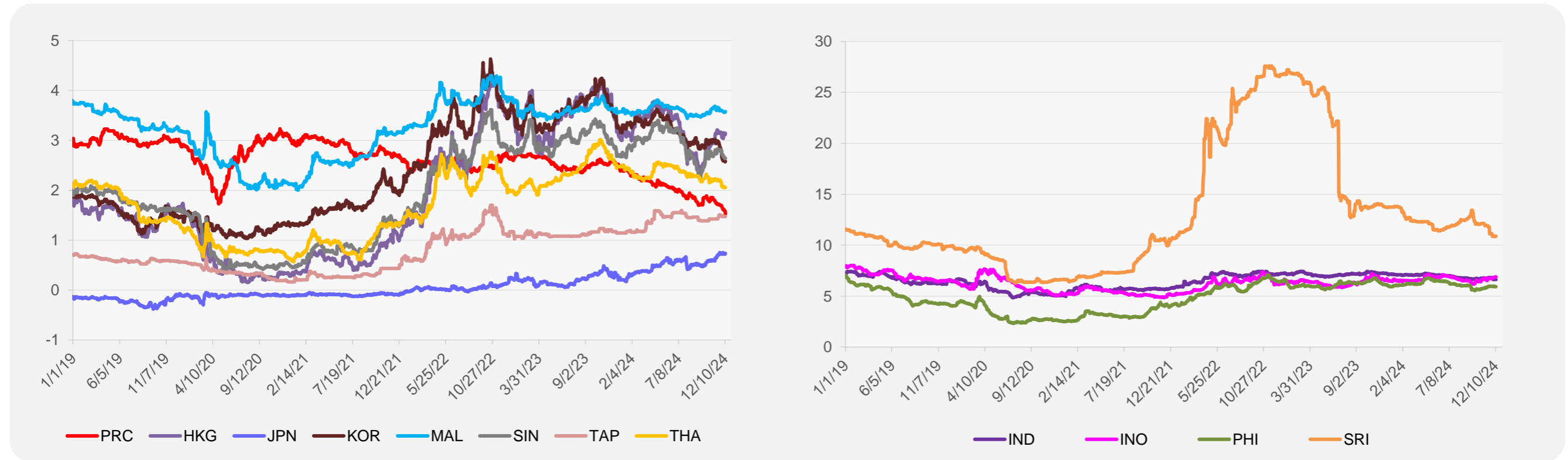
¹ Latest closing price from 4 December 2024.

² Singapore Exchange, Ribbed Smoked Sheet Rubber.

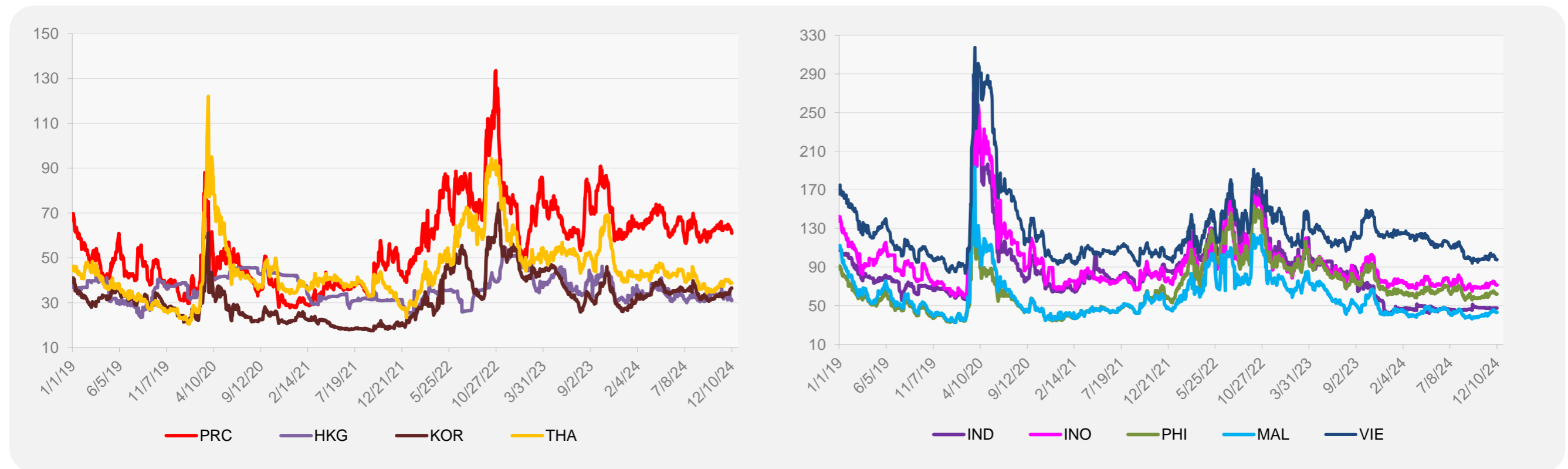


Source: ADB calculations using data from Bloomberg.

5-YEAR LOCAL CURRENCY GOVERNMENT BOND YIELDS (%)



5-YEAR CREDIT DEFAULT SWAP¹



¹ In USD and based on sovereign bonds.
Source: ADB calculations using data from Bloomberg.